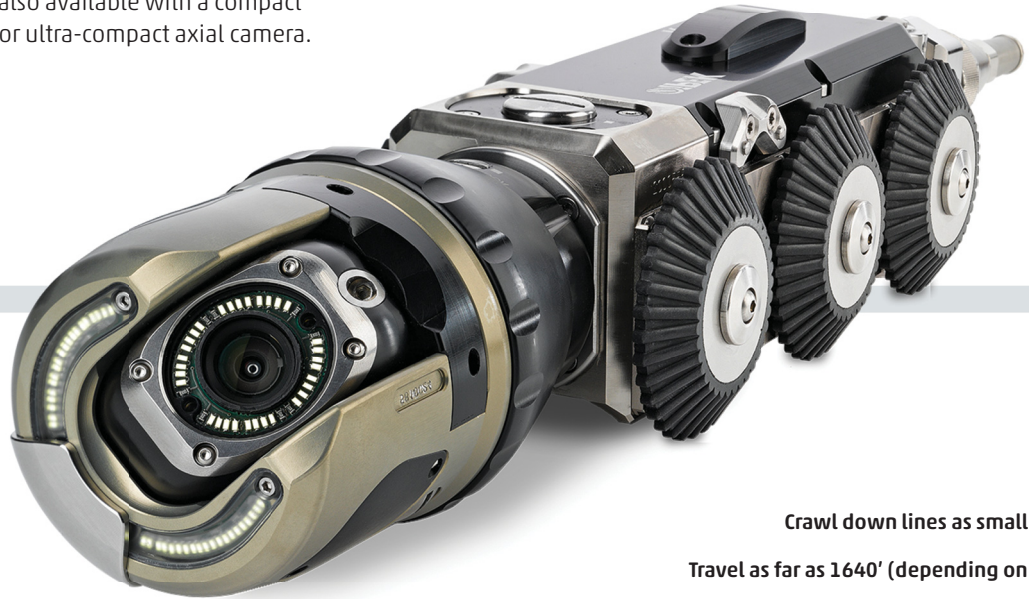


get into tight situations

underground
understood

The RX95 small-diameter crawler lets you inspect lines as narrow as 4". Like the standard-size RX130, the RX95 offers a compact, steerable six-wheel drive and a built-in sonde transmitter. It works with your existing ROVVER X reel, controls and cameras, and is also available with a compact pan/tilt camera or ultra-compact axial camera.



Crawl down lines as small as 4".

Travel as far as 1640' (depending on reel).

Maneuver past obstacles with steerable six-wheel drive.

Works with your existing ROVVER X controller, camera and reel.

On-board sonde (available in common frequencies) facilitates location.



total integration

For maximum versatility, the RX95 works with your ROVVER X auto cable reel (1000' or 1640'); desktop and handheld controls; and pan/tilt/zoom camera.



portability options

The RX95 is also available with 330' and 660' portable reels, ideal for industrial applications requiring extreme portability.



three camera choices

The RX95 accepts three available cameras: the compact pan/tilt PTP camera (shown), the standard pan/tilt/zoom RCX90, and the axial RAC50 camera.

Envirosight