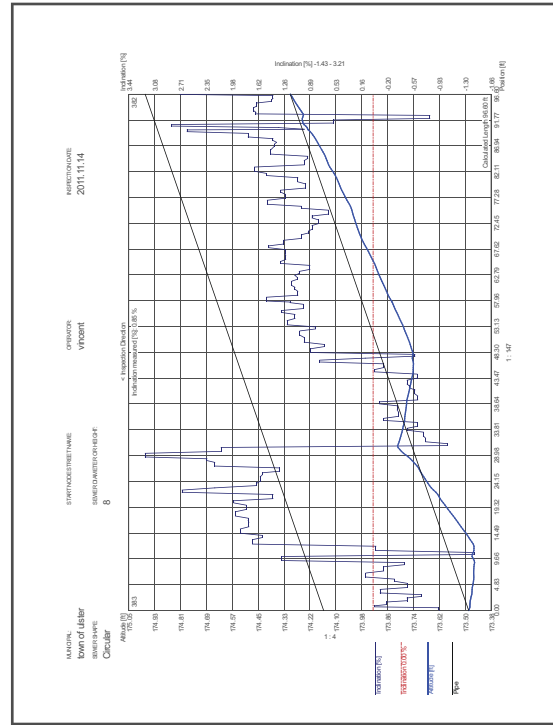




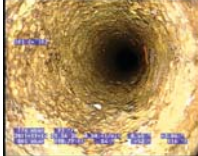


ROVVER X Sample Report

These pages are taken from a sample PDF report generated by the ROVVER X pendant. Inspection data can also be transferred seamlessly to WinCan for advanced filtering and reporting.



Section Protocol		
SECTION NAME: 383 - 382	SECTION NUMBER: 1	CATALOG NAME: NASSCO PACP-4
CUSTOMER:	PROJECT LEADER:	CONTRACTOR:



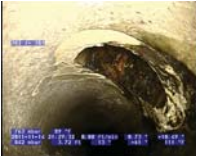
	Photo File: 383 - 382_0006.bmp Photo File 1: 383 - 382_0006.bmp Code: TBA
	Photo File: 383 - 382_0007.bmp Photo File 1: 383 - 382_0007.bmp Code: TBA
	Photo File: 383 - 382_0008.bmp Photo File 1: 383 - 382_0008.bmp Code: TBA

Section Protocol		
SECTION NAME: 383 - 382	SECTION NUMBER: 1	CATALOG NAME: NASSCO PACP-4
CUSTOMER:	PROJECT LEADER:	CONTRACTOR:


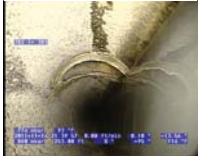

UPSTREAM MANHOLE NUMBER: 383	DOWNSTREAM MANHOLE NUMBER: 382	
TOUCHLINE: Down of Utelar	SEWER HOSE STREET NAME:	
LOCATION CODE: Parking Lot	DIRECTION OF SURVEY: Upstream	CALCULATED LENGTH: 270.99 ft
INSPECTION DATE: 2011.11.14	PURPOSE OF SURVEY: Infiltration/Inflow investigation	
TEST TYPE: Light Rain	SEWER MATERIAL: Asbestos cement	
USING METHOD: Jetting	SEWER DIAMETER OR HEIGHT: 8	
PRO-CLEANED:	SEWER SHAPE: Circular	
COMMENTS/REMARKS:		

1 : 1150	POSITION	DG	CODE	OBSERVATION	VIDEO POS	PHOTO
	5.44 ft		AMH	Manhole, begin	00:00:35	0000_0001
	0.00 ft		AMH	Manhole, begin	00:00:05	
	3.71 ft		TFA	Tap Factory Made Active, at 2 of dock, 4 inch dim	00:02:02	0002
	79.18 ft		LD	Alignment Down, 5 % changed	00:07:49	
	89.48 ft		LU	Alignment Up, 5 % changed	00:08:46	
	96.20 ft		AMH	Manhole, end	00:10:07	
	171.77 ft		TBA	Tap Break-in Active, at 9 of dock, 6 inch dim	00:05:51	0006
	172.66 ft		TBA	Tap Break-in Active, at 9 of dock, 6 inch dim	00:06:16	0007
	190.76 ft		TBA	Tap Break-in Active, at 1 of dock, 4 inch dim	00:07:27	0008
	247.61 ft		AMH	Manhole, end	00:09:43	0009
	250.99 ft		TFA	Tap Factory Made Active, at 3 of dock, 6 inch dim	00:11:45	0003
	254.30 ft		TFA	Tap Factory Made Active, at 3 of dock, 6 inch dim	00:12:05	0004
	285.65 ft		AMH	Manhole, roots from lid	00:13:35	0005
	285.65 ft		AMH	Manhole, begin	00:00:01	

Section Protocol		
SECTION NAME: 383 - 382	SECTION NUMBER: 1	CATALOG NAME: NASSCO PACP-4
CUSTOMER:	PROJECT LEADER:	CONTRACTOR:

	Photo File: 383 - 382_0000.bmp Photo File 1: 383 - 382_0000.bmp Code: AMH
	Photo File: 383 - 382_0001.bmp Photo File 1: 383 - 382_0000.bmp Code: AMH
	Photo File: 383 - 382_0002.bmp Photo File 1: 383 - 382_0002.bmp Code: TFA

Section Protocol		
SECTION NAME: 383 - 382	SECTION NUMBER: 1	CATALOG NAME: NASSCO PACP-4
CUSTOMER:	PROJECT LEADER:	CONTRACTOR:

	Photo File: 383 - 382_0009.bmp Photo File 1: 383 - 382_0009.bmp Code: AMH
	Photo File: 383 - 382_0003.bmp Photo File 1: 383 - 382_0003.bmp Code: TFA
	Photo File: 383 - 382_0004.bmp Photo File 1: 383 - 382_0004.bmp Code: TFA