



**Patent-pending technology powering the next-generation QuickView® zoom survey camera.**

Illumination has always been the limiting factor for zoom inspection performance. While today's cameras have the optical zoom to resolve detail hundreds of feet away, camera size combined with the confined space of a pipe leaves little room for illumination.

Typically, zoom cameras use offset lamps whose target zone coincides with camera view only at a specific distance range. As a result, optimal viewing over the full length of a pipe requires

continuous adjustment, and overall inspection range suffers.

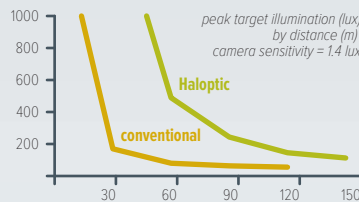
Patent-pending Haloptic illumination technology overcomes these constraints. By projecting a halo-shaped column of light that encircles the camera and conforms to the contour of pipe walls, the new Haloptic-based QuickView sees farther, requires no midstream readjustment, and delivers vivid, colorful video with markedly decreased gain, noise and distortion.

### Perfect Alignment



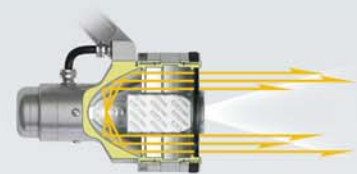
**Haloptic technology casts illumination that's centered within the camera view.** No matter what you're inspecting, rest assured that what you see is receiving optimal illumination. No more tweaking camera angle to fine-tune your view—just point the camera at a target and the illumination follows.

### Extreme Range

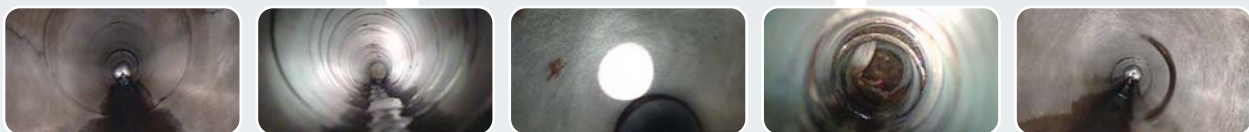


**Haloptic technology lets you see farther by flooding targets with up to 20 times more light.** A precise pairing of lamp and reflector maximizes lumen output and density, effectively doubling your inspection range. This efficient lighting also reduces power consumption to extend battery life.

### Precision Focus



**Haloptic technology concentrates light where it's needed most.** A halo-shaped column projected from behind the camera delivers high-intensity light to your subject while bathing pipe walls in bright, even illumination. Precision targeting ensures no light is wasted, and that nothing hides in the shadows.



**Above insets, left to right:** side wall and distant light (24" dia); 400' view; distant light pattern; blocked pipe at 200'; side wall and distant light (12" dia)

**Envirosight** LLC [www.envirosight.com](http://www.envirosight.com) • (866) 936-8476

QuickView, Envirosight and Haloptic names/logos are trademarks of Envirosight, LLC. ©2010 Envirosight, LLC. All rights reserved. QuickView carries patents 6,538,732 and 7,009,698; others pending.