

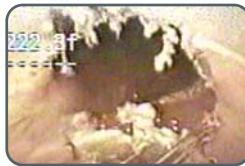


Reinstate Laterals Three Times Faster.

Hydro-Powered HydroCut Requires No Post-Cut Brushing, Auxiliary CCTV, Jetting or Confined Space Entry.

Are messy cuts, stalls, poor visibility and high operating costs holding back your relining crew? Regain productivity with HydroCut, the hydro-powered cutter that mills quickly and cleanly through the toughest materials. High-pressure water not only spins the cutter with 5 times the conventional force, it cleans the onboard cameras and cools the motor and bit for maximum life.

- **Rapid Deployment.** HydroCut moves under its own power. That means no stringing winch lines from a secondary access point using a CCTV crawler. Its overhead outrigger and interchangeable wheels boost traction to maximize crawling range.
- **Maximum Uptime.** A single HydroCut bit lasts 90 hours, so progress isn't interrupted by time-consuming bit changes. Also, HydroCut's hydro turbine requires significantly less maintenance than an air motor, and most maintenance can be performed right in the field.
- **Clear View.** HydroCut's stabilizing outrigger and high-speed motor minimize camera vibration. Integral camera rinsing keeps video obstruction-free.
- **Extreme Versatility.** HydroCut systems are portable, traveling to any job site. They're also modular, so you can quickly change wheels and bits. Where conservation is required, water recirculation is also available.



HydroCut eliminates the burrs gouges and tearing (shown here) left by pneumatic cutters.



Hydro Power Advantage

Triple the Productivity



High-torque, water-cooled cutting combined with long-life bits, twin water-rinsed cameras and advanced traction/stabilization allow you to reinstate laterals in one third the time—without costly support equipment.

Longer Life



HydroCut's hydro motor is water cooled and moisture tolerant, and has few wear parts.

Pneumatic motors often seize and overheat.

5 Times the Torque



Delivering 5 hp at 30,000 rpm, HydroCut makes faster, cleaner cuts on any material.

Weaker air motors stall, leave rough edges, risk gouging, and require post-cut brushing.

Clearer View



Onboard forward- and side-view cameras with water rinse ensure a clear view at all times.

A winch system requires an additional CCTV crawler, which lacks water-rinse.

Less Gear, Fewer Personnel



The self-propelled HydroCut operates as standalone system from a single entry point.

Winching systems require additional CCTV equipment, jetting trucks, confined-space entry, and two access points.

Diamond Cut Advantage

Longer Life



Diamond-impregnated, hardened-steel Kardiam cutting bits are available in the U.S. only with HydroCut cutters.

Under proper use, these bits are rated for 75–100 hours.

Kardiam cutting bits are available hundreds of styles and sizes. For a catalog, please contact EnviroSight.



globe

for concrete/clay
8, 16 or 21 segments,
1.42–2.36" dia.



mushroom

for concrete/clay
8 or 12 segments,
1.69–3.35" dia.



mushroom

for concrete/clay
10 or 15 segments,
2.36–3.94" dia.



cone cylinder

for plastic/PVC/liner
22 or 24 segments,
1.65" or 1.97" dia.



mushroom

for plastic/PVC/liner
24 segments, 2.48" dia.



globe

for plastic/PVC/liner
14 or 28 segments,
1.26" or 1.57" dia.



cylinder

for plastic/PVC/liner
18 segments, 1.77" dia.



cone

for plastic/PVC/liner
10 or 16 segments,
1.18" or 1.57" dia.



cone

for concrete/clay
8 segments,
1.89–2.17" dia.



finger

for concrete/clay
5 segments, 0.98" dia.



finger

for concrete/clay
1 segments, 0.47" dia.



saw

for plastic/PVC/liner
various diameters

HydroCut 150

HydroCut 200



Pipe Compatibility	6–14" Lines	8–24" Lines
Bend Tolerance	n/a	n/a
Max Travel Distance	165' or 260'	165' or 260'
Delivery Method	Self-Propelled (Electric)	Self-Propelled (Electric)
Mill Power	7.2 hp / 5.4 kW	7.2 hp / 5.4 kW
Mill Speed	20–30K rpm	20–30K rpm
Mill Arm Articulation	400°	400°
Mill Motor Type	hydro †	hydro †
Cameras	mill arm, forward view	forward view
Stabilization	hydraulic outrigger	n/a
Weight	55 lb	132 lb
Electrical Req.	6A @ 110V/ 60 Hz	6A @ 110V/ 60 Hz
Minimum Water Pres. Req.	3.5 gpm @ 3000 psi ‡	3.5 gpm @ 3000 psi ‡
Cable/Hose Length	165', 260', 330' or 500'	165', 260', 330' or 500'
Cable/Hose Weight	0.336 lb/ft (empty)	0.336 lb/ft (empty)
Water Recirculation	optional on 165' reel	optional on 165' reel
Reel Options	portable, motorized	portable, motorized
		
Controls Compatibility	standard or built-in	standard or built-in
		

† All motor parts are field replaceable.

‡ Nozzle inserts are available to fine tune motor to available pressure.